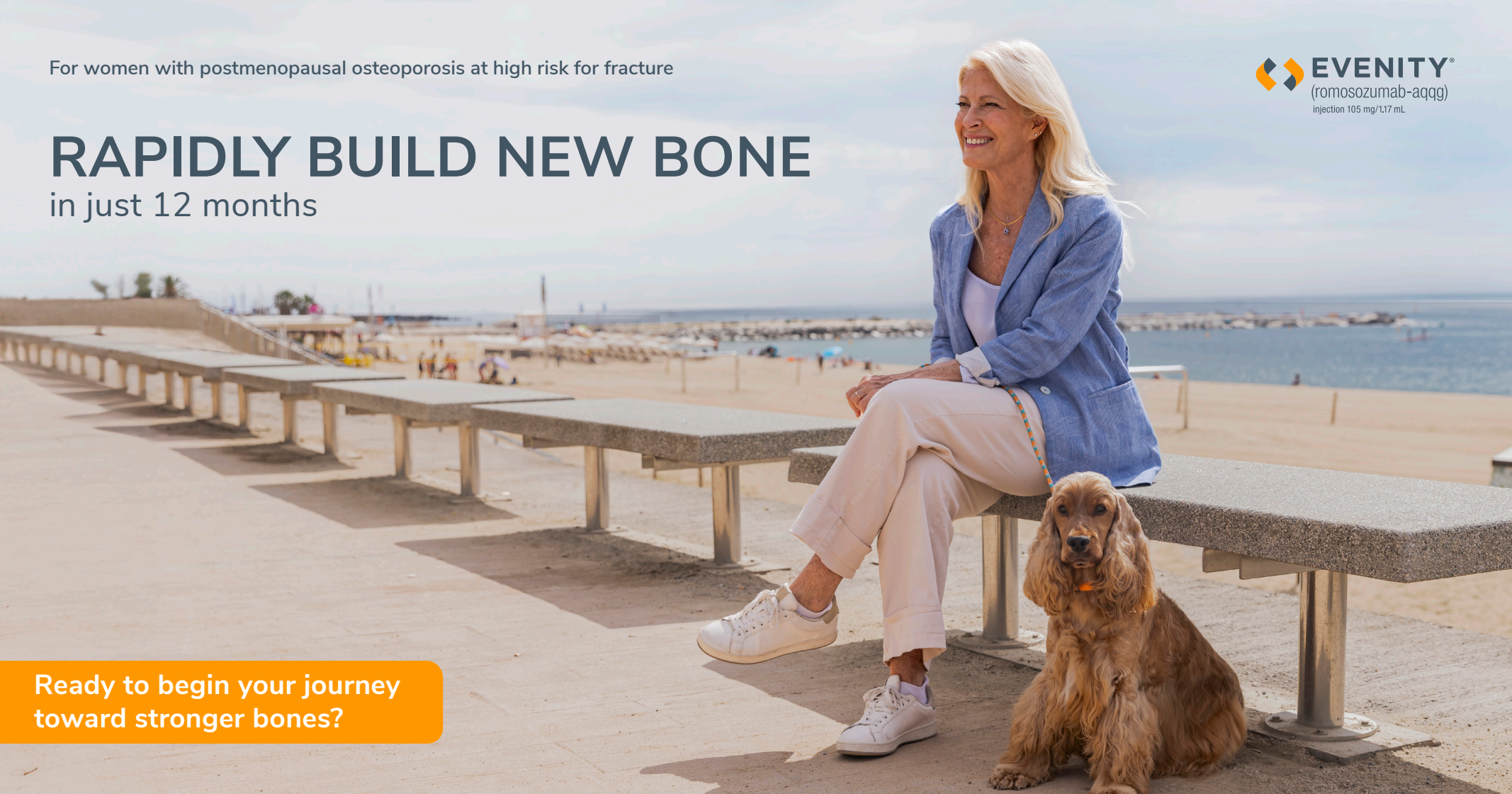


For women with postmenopausal osteoporosis at high risk for fracture



# RAPIDLY BUILD NEW BONE

in just 12 months



Ready to begin your journey toward stronger bones?

## Approved Use

EVENTITY® is a prescription medicine used to treat osteoporosis in women after menopause who are at high risk of fracture, or cannot use another osteoporosis medicine or other osteoporosis medicines did not work well.

## Important Safety Information

What is the most important information I should know about EVENTITY?

EVENTITY can cause serious side effects, including increased risk of having a heart attack, stroke, or death from a cardiovascular (heart or blood vessel) problem. Call your healthcare provider or get emergency help right away if you have any of these symptoms: symptoms

of heart attack, which may include: chest pain or pressure; shortness of breath; feeling light-headed or dizzy; or symptoms of stroke, which may include: headache; numbness or weakness in face, arm, or legs; difficulty talking; changes in vision or loss of balance. Before you receive EVENTITY, tell your healthcare provider if you have had a heart attack or stroke, especially if it has happened in the past year.

Please see additional Important Safety Information on page 8.

# Understand YOUR RISK

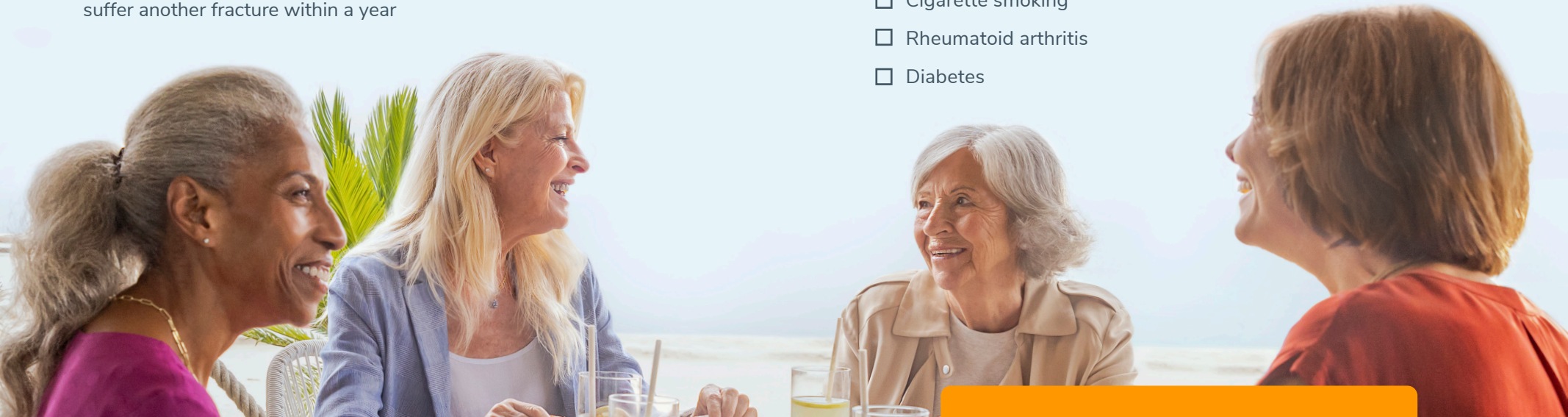
**Not treating your postmenopausal osteoporosis will further increase your risk of fracture.**

- ▶ Your body loses more bone than it creates after menopause
- ▶ Osteoporosis is a silent and progressive disease, meaning it gets worse over time when not treated. The only warning sign may be a bone break
- ▶ 2 out of 3 women with postmenopausal osteoporosis at high risk for fracture will break a bone in their lifetime
- ▶ After an osteoporosis-related fracture, you're 5x more likely to suffer another fracture within a year

## Know Your Risk

The more of the following risk factors you have, the higher your risk of breaking a bone.

- T-score less than or equal to -2.5
- Age 65 or older
- Low body weight
- Previous fracture
- Long-term steroid use such as prednisone
- Excessive alcohol  $\geq 3$  drinks/day
- Parent suffered hip fracture
- Cigarette smoking
- Rheumatoid arthritis
- Diabetes



### Important Safety Information (continued)

**Do not receive EVENITY<sup>®</sup> if you:** have low blood calcium; or are allergic to romosozumab or any of the ingredients in EVENITY.

Please see additional Important Safety Information on page 8.

### Concerned you may be at risk?

Don't wait for a fracture. Act now and talk to your doctor about building new bone with EVENITY.



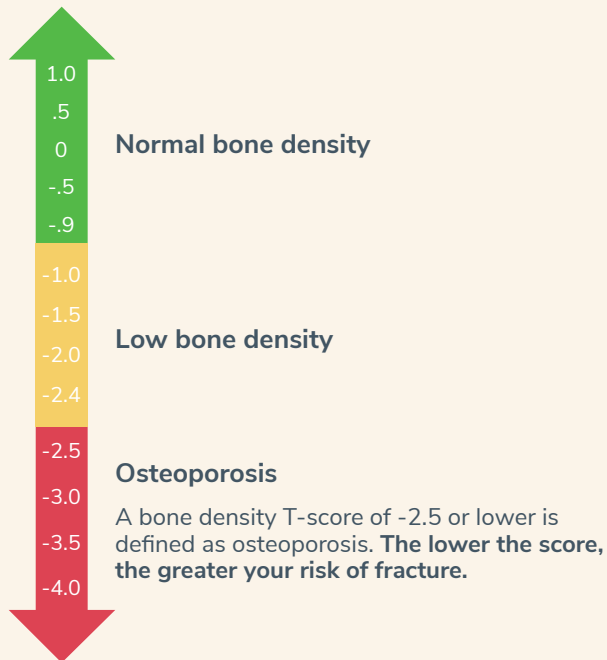
# KNOW YOUR SCORE, know you have options

## Is it time for a DXA scan?

A DXA scan is a quick, painless, noninvasive procedure that measures bone density and provides a T-score to understand how severe your osteoporosis is and if you are at risk for a bone fracture.

If you have been diagnosed with postmenopausal osteoporosis, your doctor may recommend a bone density scan every 1 to 2 years to monitor your progress on treatment.

## Your T-score helps to determine the severity of your risk of breaking a bone



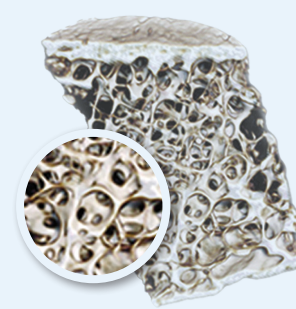
## Important Safety Information (continued)

EVENITY<sup>®</sup> may cause serious side effects. Possible serious side effects include serious allergic reactions, low blood calcium, severe jaw bone problems, and unusual thigh bone fractures.

Please see additional Important Safety Information on page 8.

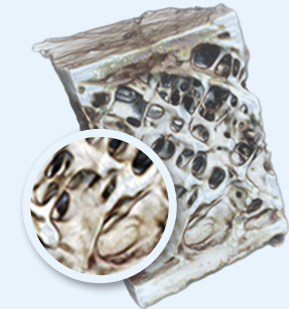
## EVENITY rapidly builds new bone in just 12 months

### BONES WITH OSTEOPOROSIS



#### UNTREATED

A pelvis bone sample taken at month 12 from a woman with postmenopausal osteoporosis receiving placebo.



#### TREATED WITH EVENITY

A pelvis bone sample taken at month 12 from a woman with postmenopausal osteoporosis receiving EVENITY.

For illustrative purposes only. Bone samples were taken from 2 different women in a substudy consisting of 139 women with postmenopausal osteoporosis. Images selected are from women who were close to the average in each group.

Ready to  
do more than  
slow bone loss?

Ask your doctor if now is  
the time to start building  
new bone.



# Why EVENTITY®

## EVENTITY is the first and only osteoporosis treatment that works two ways

Commonly prescribed osteoporosis treatments only work in one of two ways: antiresorptives slow down bone loss, while anabolics help to stimulate bone formation.

EVENTITY is the only bone builder that also can help slow bone loss, to a lesser degree.



## Getting started on EVENTITY

**1=2**

DOSE SHOTS

Each EVENTITY dose consists of 2 shots



GIVEN MONTHLY

EVENTITY is given monthly during your office visit

**12**

MONTHS

EVENTITY is taken for just 12 months

Each EVENTITY dose consists of 2 shots given under your skin every month by your doctor or healthcare provider. You should take calcium and vitamin D as your doctor tells you to while you receive EVENTITY. If you miss an appointment, contact your doctor as soon as possible to reschedule.

## Important Safety Information (continued)

The most common side effects of EVENTITY are joint pain and headaches.

Please see additional Important Safety Information on page 8.

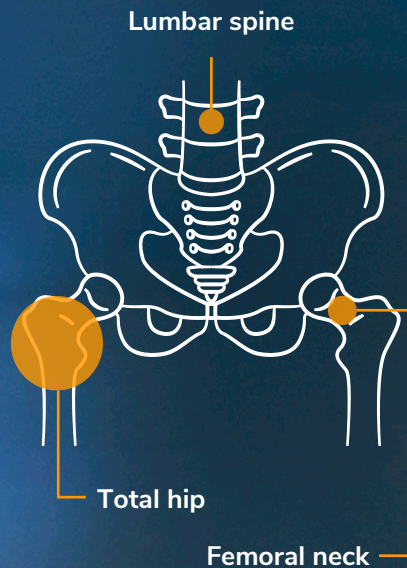
## Ready to do more than slow bone loss?

Ask your doctor if now is the time to start building new bone.



# Results at 12 MONTHS

**EVENTITY significantly increased bone mineral density in the lumbar spine, total hip, and femoral neck at 12 months vs placebo\***



\*BMD results do not imply fracture risk reduction.

In a study that followed over 7,000 women with postmenopausal osteoporosis receiving EVENTITY or placebo (a treatment without medicine) for 12 months, women on EVENTITY experienced a significant increase in the bone mineral density (BMD) of their lumbar spine, total hip, and femoral neck compared to women on placebo.

## Important Safety Information (continued)

You should take calcium and vitamin D as your doctor tells you to while you receive EVENTITY.

Please see additional Important Safety Information on page 8.

## EVENTITY significantly reduces spine fracture risk in just 12 months

In the same clinical study as shown on this spread, women receiving EVENTITY had fewer new spine fractures than women receiving placebo at 12 months. Reductions in fractures other than the spine were not significant at 12 months.

### After 12 months of EVENTITY, ask your doctor about

- ▶ Scheduling a DXA scan to see your treatment results following EVENTITY
- ▶ A follow-up treatment to maintain the new bone you've built

**Is it time to start building new bone with EVENTITY?**

Ask your doctor if EVENTITY is right for you.



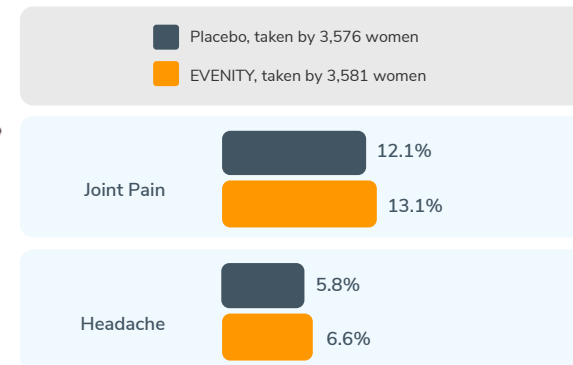
## EVENITY has been studied in nearly 12,000 women

Any time you start a new medicine, it's a good idea to understand the possible side effects. **In the case of osteoporosis, it's also important to understand that not treating it could result in a higher risk of fracture.** Talk to your doctor and together you can make an informed decision.

### An EVENITY study of over 7,000 women

Drug safety is important. EVENITY was studied to learn about the benefits and possible side effects that come along with taking it.

One EVENITY study evaluated over 7,000 women with postmenopausal osteoporosis who received either EVENITY or placebo. The most common side effects were joint pain and headache. These are not all of the possible side effects of EVENITY. Talk to your doctor to learn more about the potential serious side effects of EVENITY. See the comparison of the most common side effects from the study reported below.



To learn even more, visit  
[evenity.com](https://www.evenity.com)



## EVENTITY is covered by many Medicare and commercial plans

Individual patient out-of-pocket costs will vary.

### MEDICARE

- ▶ Most Medicare Part B patients have additional insurance and could pay \$0 per dose of EVENTITY\*†
- ▶ After you meet your deductible, Medicare Part B typically covers 80% of therapies you receive in your doctor's office
- ▶ You can obtain an additional insurance (e.g., Medicare Supplement Plan or Medigap, commercial, TRICARE) to pick up the additional 20%‡
  - You may need to pay additional monthly premiums with these additional insurances
  - Out-of-pocket costs do not include costs related to office visits or administration of EVENTITY
- ▶ What you pay for EVENTITY will depend on the type of Medicare plan you have. Talk to your insurance provider to find out what you will pay for EVENTITY

\*Amgen SupportPlus Insurance verification data for January 2023 to December 2023 was analyzed to determine the OOP Distribution. EVENTITY prospective patients are only included in the analysis.

†The amount you pay may depend on coverage of additional insurance plan(s).

‡You must be enrolled in Medicare Part A and Part B to receive coverage through Medicare Supplement Insurance (Medigap). Medicare Supplement Insurance may require additional monthly premiums.

### COMMERCIAL INSURANCE

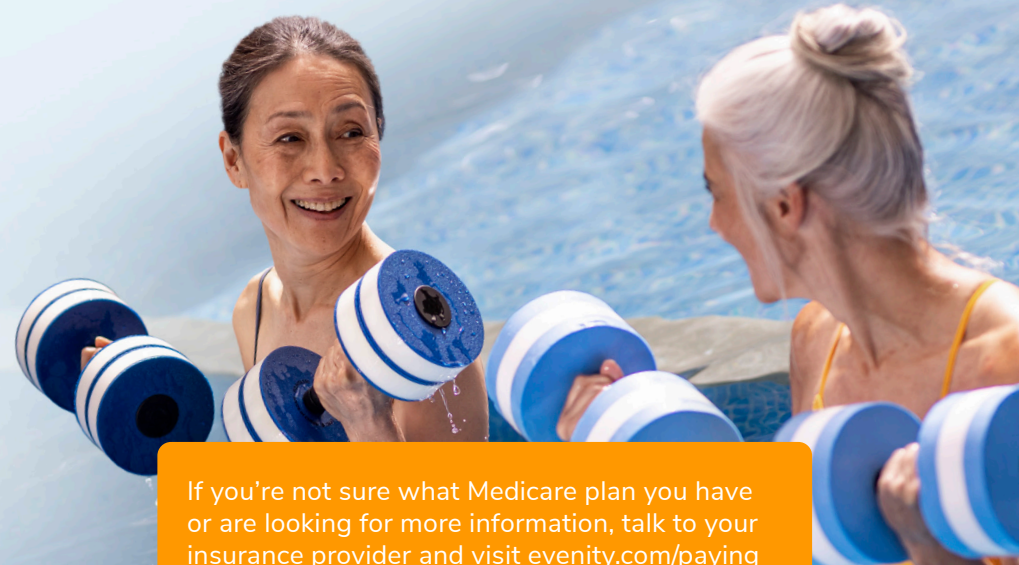
- ▶ The Amgen® SupportPlus Co-Pay Program may help patients with private or commercial insurance lower their out-of-pocket costs
- ▶ Eligible commercially insured patients could pay as little as \$25 per dose with the Amgen SupportPlus Co-Pay Program
- ▶ Can be applied to deductible, co-insurance, and co-payment
- ▶ Eligibility criteria and program maximums apply. See [www.amgensupportplus.com/copay](http://www.amgensupportplus.com/copay) for full Terms and Conditions



### UNINSURED

- ▶ Amgen Support Plus Representatives can provide information about independent nonprofit foundations that may be able to help.§ Please contact Amgen SupportPlus for more information at 1-866-264-2778

§Eligibility for resources provided by independent nonprofit patient assistance programs is based on the nonprofit's criteria. Amgen has no control over these programs and provides information as a courtesy only.



If you're not sure what Medicare plan you have or are looking for more information, talk to your insurance provider and visit [evenity.com/paying](http://evenity.com/paying) to see more details.



## Important Safety Information

What is the most important information I should know about EVENITY<sup>®</sup>?

**EVENITY can cause serious side effects, including increased risk of having a heart attack, stroke, or death from a cardiovascular (heart or blood vessel) problem.** Call your healthcare provider or get emergency help right away if you have any of these symptoms: symptoms of **heart attack**, which may include: chest pain or pressure; shortness of breath; feeling light-headed or dizzy; or symptoms of **stroke**, which may include: headache; numbness or weakness in face, arm, or legs; difficulty talking; changes in vision or loss of balance. Before you receive EVENITY, tell your healthcare provider if you have had a heart attack or stroke, especially if it has happened in the past year.

**Do not receive EVENITY if you:** have low blood calcium; or are allergic to romosozumab or any of the ingredients in EVENITY.

**Before receiving EVENITY, tell your healthcare provider about all your medical conditions, including if you:**

- have a history of other heart or blood vessel problems
- have low blood calcium
- cannot take daily calcium and vitamin D
- have kidney problems or are on kidney dialysis
- plan to have dental surgery or teeth removed

**What are the possible side effects of EVENITY?**

**EVENITY may cause serious side effects, including:**

**Serious allergic reactions** have happened in people who receive EVENITY. Call your healthcare provider or go to the nearest emergency room right away if you have any symptoms of a serious allergic reaction including: rash; hives; swelling of the face, lips, mouth, tongue, or throat which may cause difficulty in swallowing or breathing.

**Low calcium levels in your blood (hypocalcemia).** EVENITY may lower the calcium levels in your blood. Your low blood calcium should be treated before you receive EVENITY. Call your healthcare provider if you have symptoms of low blood calcium such as: spasms, twitches, or cramps in your muscles; numbness or tingling in your fingers, toes or around your mouth.

**Severe jaw bone problems (osteonecrosis)** may occur. Your healthcare provider should examine your mouth before you start EVENITY and may tell you to see your dentist. Ask your healthcare provider or dentist about good mouth care.

**Unusual thigh bone fractures.** Symptoms of this type of fracture include new or unusual pain in your hip, groin, or thigh.

**The most common side effects of EVENITY include** joint pain and headaches.

These are not all the possible side effects of EVENITY. Call your doctor for medical advice about side effects.

You are encouraged to report negative side effects of prescription drugs to the FDA. Visit [www.fda.gov/medwatch](http://www.fda.gov/medwatch), or call 1-800-FDA-1088.

**Please see accompanying EVENITY full Prescribing Information, including Medication Guide.**



Some ways to help you start the conversation with your doctor:

- ▶ What can happen if I don't treat my postmenopausal osteoporosis?
- ▶ How could a bone builder like EVENITY® help lower my risk of fracture?
- ▶ How does EVENITY compare to other postmenopausal osteoporosis treatments?

You can also visit [evenity.com](https://www.evenity.com)



**Bone  
Matters**<sup>®</sup>

## Get support with our Bone Matters<sup>®</sup> program.

EVENITY patients can sign up for courtesy injection reminders, nutrition insights, and tips for staying active at [bonematters.com](https://www.bonematters.com)